

Advance Information



HAL[®] 283x

Linear Hall-Effect Sensor Family
with SENT Interface

Copyright, Warranty, and Limitation of Liability

The information and data contained in this document are believed to be accurate and reliable. The software and proprietary information contained therein may be protected by copyright, patent, trademark and/or other intellectual property rights of Micronas. All rights not expressly granted remain reserved by Micronas.

Micronas assumes no liability for errors and gives no warranty representation or guarantee regarding the suitability of its products for any particular purpose due to these specifications.

By this publication, Micronas does not assume responsibility for patent infringements or other rights of third parties which may result from its use. Commercial conditions, product availability and delivery are exclusively subject to the respective order confirmation.

Any information and data which may be provided in the document can and do vary in different applications, and actual performance may vary over time.

All operating parameters must be validated for each customer application by customers' technical experts. Any new issue of this document invalidates previous issues. Micronas reserves the right to review this document and to make changes to the document's content at any time without obligation to notify any person or entity of such revision or changes. For further advice please contact us directly.

Do not use our products in life-supporting systems, aviation and aerospace applications! Unless explicitly agreed to otherwise in writing between the parties, Micronas' products are not designed, intended or authorized for use as components in systems intended for surgical implants into the body, or other applications intended to support or sustain life, or for any other application in which the failure of the product could create a situation where personal injury or death could occur.

No part of this publication may be reproduced, photocopied, stored on a retrieval system or transmitted without the express written consent of Micronas.

Micronas Trademarks

– HAL

Third-Party Trademarks

All other brand and product names or company names may be trademarks of their respective companies.

Contents

| Page | Section | Title |
|-------------|----------------|---|
| 4 | 1. | Introduction |
| 4 | 1.1. | Major Applications |
| 4 | 1.2. | Features |
| 5 | 1.3. | Marking Code |
| 5 | 1.4. | Operating Junction Temperature Range (T_J) |
| 5 | 1.5. | Hall Sensor Package Codes |
| 5 | 1.6. | Solderability and Welding |
| 5 | 1.7. | Pin Connections and Short Descriptions |
| 6 | 2. | Functional Description |
| 6 | 2.1. | General Function |
| 7 | 2.2. | Digital Signal Processing |
| 8 | 2.2.1. | Temperature Compensation |
| 9 | 2.2.2. | DSP Configuration Registers |
| 12 | 2.3. | Power-on Self Test (POST) |
| 13 | 3. | Specifications |
| 13 | 3.1. | Outline Dimensions |
| 17 | 3.2. | Dimensions of Sensitive Area |
| 17 | 3.3. | Positions of Sensitive Area |
| 17 | 3.4. | Absolute Maximum Ratings |
| 17 | 3.4.1. | Storage, Moisture Sensitivity Class, and Shelf Life |
| 18 | 3.5. | Recommended Operating Conditions |
| 18 | 3.6. | Electrical Characteristics |
| 19 | 3.7. | Magnetic Characteristics |
| 20 | 3.8. | Thermal Characteristics |
| 20 | 3.8.1. | Definition of Sensitivity Error ES |
| 22 | 4. | The SENT Module |
| 27 | 5. | Programming of the Sensor |
| 27 | 5.1. | Programming Interface |
| 28 | 5.2. | Programming Environment and Tools |
| 28 | 5.3. | Programming Information |
| 29 | 6. | Application Notes |
| 29 | 6.1. | Ambient Temperature |
| 29 | 6.2. | EMC and ESD |
| 29 | 6.3. | Application Circuit |
| 32 | 7. | Data Sheet History |

Linear Hall-Effect Sensor Family with SENT Interface

Release Note: Revision bars indicate significant changes to the previous edition.

1. Introduction

The HAL 283x are members of the Micronas family of programmable linear Hall-effect sensors. The subfamily HAL 283x consists of the four members described in the following table:

Table 1–1: Family Overview

| Type | Resolution | Pause Pulse | SENT version |
|----------|------------|-------------|---------------------------|
| HAL2830 | 12 bit | No | SAE-J2716 release 2010-01 |
| HAL 2831 | 16 bit | No | SAE-J2716 release 2010-01 |
| HAL 2832 | 12 bit | Yes | SAE-J2716 release 2010-01 |
| HAL 2833 | 16 bit | Yes | SAE-J2716 release 2010-01 |

The HAL 283x features a temperature-compensated Hall plate with spinning current offset compensation, an A/D converter, digital signal processing, an EEPROM memory with redundancy and lock function for the calibration data, and protection devices at all pins. The internal digital signal processing is of great benefit because analog offsets, temperature shifts, and mechanical stress do not degrade digital signals.

The easy programmability allows a 2-point calibration by adjusting the output signal directly to the input signal (like mechanical angle, distance, or current). Individual adjustment of each sensor during the customer's manufacturing process is possible. With this calibration procedure, the tolerances of the sensor, the magnet, and the mechanical positioning can be compensated in the final assembly.

In addition, the temperature compensation of the Hall IC can be fit to all common magnetic materials by programming first- and second-order temperature coefficients of the Hall sensor sensitivity. It is also possible to compensate offset drifts over temperature generated by the customer application with a first order temperature coefficient of the sensors offset. This enables operation over the full temperature range with high accuracy.

For programming purpose, the sensor features a programming interface with a Biphase-M protocol on the DIO pin (output).

In the application mode, the sensor provides a continuous SENT data stream.

1.1. Major Applications

- Contactless potentiometers
- Angular measurements (e.g. valve, throttle, pedal position)
- Linear movement (e.g. seat track position)
- Linear force or torque measurements
- Current sensing (e.g. battery management)

1.2. Features

- High precision linear Hall-effect sensor
- Spinning current offset compensation
- 20 bit digital signal processing
- Output resolution up to 16 bit
- ESD protection (± 8 kV HBM) at all pins and reverse protection at V_{SUP} pin
- Various sensor parameter are programmable (like offset, sensitivity, temperature coefficients, etc.)
- NV memory with redundancy and lock function
- Programmable temperature compensation for sensitivity (2nd order) and offset (1st order)
- Typical magnetic ranges from ± 20 mT up to ± 160 mT in 20 mT steps
- Sample period programmable from 0.5 ms to 33 ms. Second-order low-pass filter for sample period down to 2 ms
- Onboard diagnostics (overvoltage, output current, overtemperature, signal path overflow)
- Power-On self-test covering memory and full signal path from Hall plates to SENT output
- Biphase-M interface (programming mode)
- SENT clock tick time programmable between 2 μ s and 17.75 μ s
- Low tick time programmable between 3 and 6.75 clock ticks
- Sample accurate transmission of magnetic field information
- Transmission of temperature and device information by serial data messages in the status nibble
- Open-drain output with slew-rate control (load independent)
- Programming and operation of multiple sensors at the same supply line

1.3. Marking Code

The HAL 283x have a marking on the package surface (branded side). This marking includes the name of the sensor and the temperature range.

| Type | Temperature Range | |
|----------|-------------------|-------|
| | A | K |
| HAL2830 | 2830A | 2830K |
| HAL 2831 | 2831A | 2831K |
| HAL 2832 | 2832A | 2832K |
| HAL 2833 | 2833A | 2833K |

1.4. Operating Junction Temperature Range (T_J)

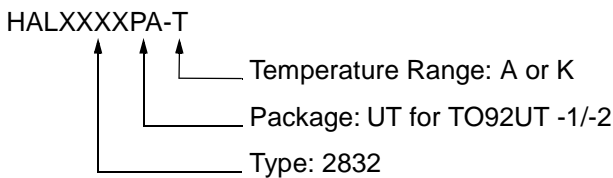
The Hall sensors from Micronas are specified to the chip temperature (junction temperature range T_J).

A: T_J = -40 °C to +170 °C

K: T_J = -40 °C to +140 °C

The relationship between ambient temperature (T_A) and junction temperature is explained in Section 6.1. on page 29

1.5. Hall Sensor Package Codes



Example: **HAL2832UT-K**

- Type: 2832
- Package: TO92UT-1/-2
- Temperature Range: T_J = -40 °C to +140 °C

Hall sensors are available in a wide variety of packaging versions and quantities. For more detailed information, please refer to the brochure: "Hall Sensors: Ordering Codes, Packaging, Handling".

1.6. Solderability and Welding

Solderability

During soldering reflow processing and manual reworking, a component body temperature of 260 °C should not be exceeded.

Welding

Device terminals should be compatible with laser and resistance welding. Please note that the success of the welding process is subject to different welding parameters which will vary according to the welding technique used. A very close control of the welding parameters is absolutely necessary in order to reach satisfying results. Micronas, therefore, does not give any implied or express warranty as to the ability to weld the component.

1.7. Pin Connections and Short Descriptions

| Pin No. | Pin Name | Type | Short Description |
|---------|----------|------------|---------------------------|
| 1 | VSUP | | Supply Voltage |
| 2 | GND | | Ground |
| 3 | DIO | IN/ OUT | Digital IO SENT Output |

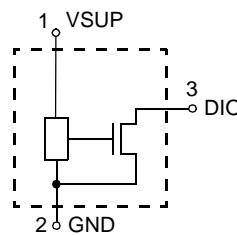


Fig. 1-1: Pin configuration

2. Functional Description

2.1. General Function

The HAL 283x is a monolithic integrated circuit, which provides an output signal proportional to the magnetic flux through the Hall plate.

The external magnetic field component, perpendicular to the branded side of the package, generates a Hall voltage. The Hall IC is sensitive to magnetic north and south polarity. This voltage is converted to a digital value, processed in the digital signal processing unit (DSP) according to the settings of the EEPROM registers.

The function and the parameters for the DSP are explained in Section 2.2. on page 7.

Internal temperature compensation circuitry and the spinning current offset compensation enables operation over the full temperature range with minimal changes in accuracy and high offset stability. The circuitry also rejects offset shifts due to mechanical stress from the package.

The HAL 283x provides two operation modes, the application mode and the programming mode.

Application Mode

The output signal is provided as continuous SENT data stream.

Programming Mode

For the programming of the sensor parameters, a Biphas-M protocol is used.

The HAL 283x provides non-volatile memory which is divided in different blocks. The first block is used for the configuration of the digital signal processing, the second one is used by the various customer settings. The non-volatile memory employs inherent redundancy.

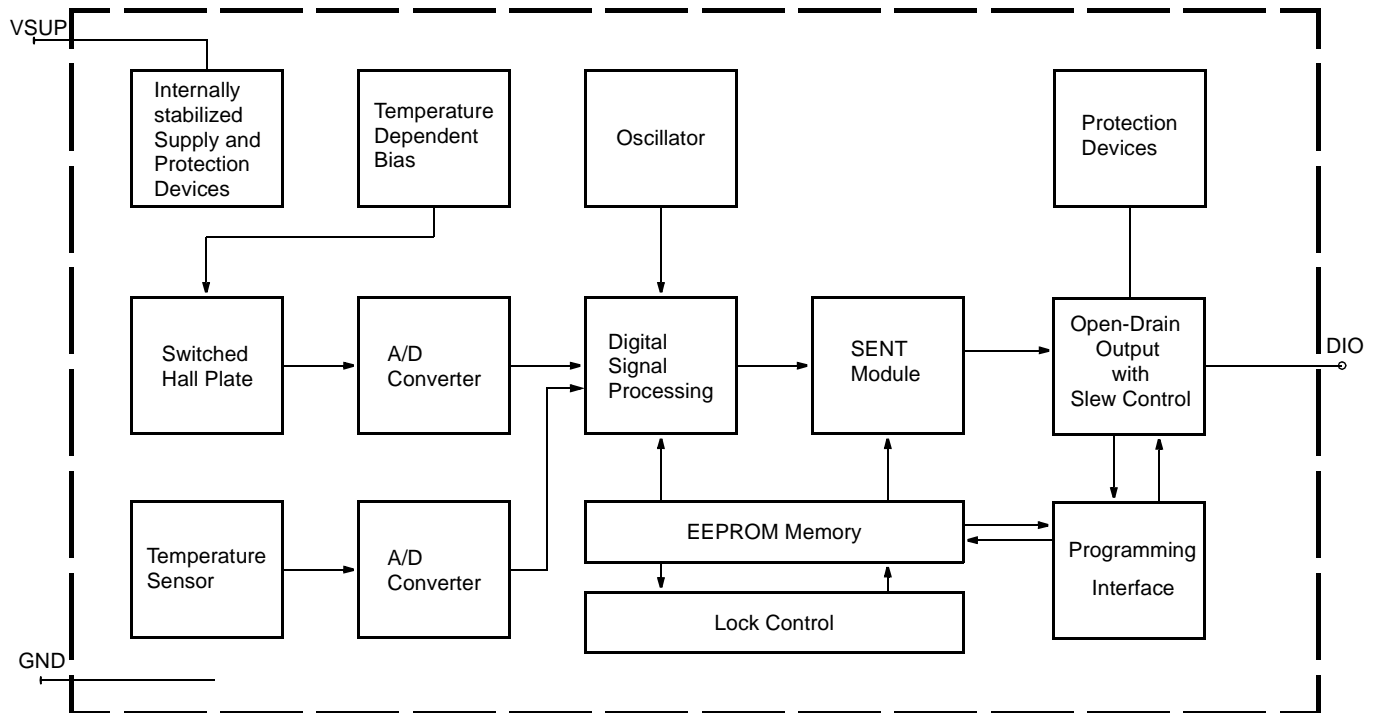


Fig. 2-1: HAL 283x block diagram

2.2. Digital Signal Processing

All parameters and the values y , y_{TCI} are normalized to the interval $(-1, 1)$ which represents the full-scale magnetic range as programmed in the RANGE register.

Example for 40 mT Range

-1 equals -40 mT
+1 equals + 40 mT

For the definition of the register values, please refer to Section 2.2.2. on page 9.

The digital signal processing (DSP) is the major part of the sensor and performs the signal conditioning. The parameters of the DSP are stored in the DSP CONFIG area of the EEPROM.

The device provides a digital temperature compensation. It consists of the internal temperature compensation, the customer temperature compensation, as well as an offset and sensitivity adjustment. The internal

temperature compensation (factory compensation) eliminates the temperature drift of the Hall sensor itself. The customer temperature compensation is calculated after the internal temperature drift has been compensated. Thus, the customer has not to take care about the sensor's internal temperature drift.

The output value y is calculated out of the factory-compensated Hall value y_{TCI} as:

$$y = [y_{TCI} + d(TVAL)] \cdot c(TVAL)$$

Parameter d is representing the offset and c is the coefficient for sensitivity.

The signal path contains a digital low-pass filter up to second order with a programmable sampling frequency from 32 Hz up to 2 kHz (see Table 2-2 on page 11).

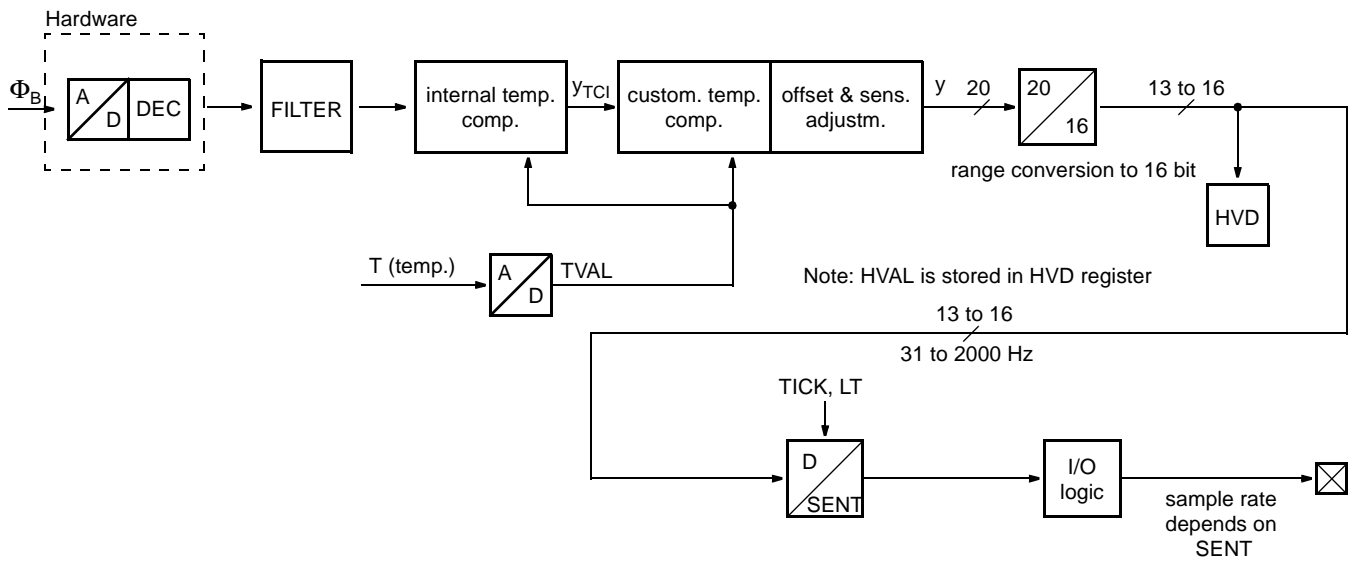


Fig. 2-2: Block diagram of digital signal path including digital filter

The temperature-compensated Hall value is saved in the HVD register.

The SENT interface transmits continuously Hall samples. The HVD value is transmitted at the beginning of a new SENT message.

After power-up, the registers HVD and TVD are set to the negative overflow value until valid data are available.

2.2.1. Temperature Compensation

Terminology:

D0: name of the register or register value

d₀: name of the parameter

The customer programmable parameters “c” (sensitivity) and d (offset) are polynomials of the temperature. The temperature is represented by the adjusted read-out value TVAL of a built-in temperature sensor.

The update rate of the temperature value TVAL is less than 100 ms.

The sensitivity polynomial c(TVAL) is of second order in temperature:

$$c(TVAL) = c_0 + c_1 \cdot TVAL + c_2 \cdot TVAL^2$$

For the definition of the polynomial coefficients, please refer to Section 2.2.2. on page 9.

The offset polynomial d(TVAL) is linear in temperature:

$$d(TVAL) = d_0 + d_1 \cdot TVAL$$

For the definition of the polynomial coefficients, please refer to Section 2.2.2. on page 9.

For the calibration procedure of the sensor in the system environment, the two values HVAL and TVAL are provided. These values are stored in volatile registers.

HVAL

The number HVAL represents the digital output value y which is proportional to the applied magnetic field.

HVAL is 16-bit two’s complement binary ranging from –32768 to +32767.

Note: The number of valid bits varies between 13 and 16 bit. The resolution depends on the selected sample and filter frequency.

It is stored in the HVD register (see Section 5.2. on page 27).

$$y = \frac{HVAL}{32768}$$

In case of internal overflows, the output will clamp to the maximum or minimum HVAL value.

Please take care that during calibration, the output signal range does not reach the maximum/minimum value.

TVAL

The number TVAL provides the adjusted value of the built-in temperature sensor.

TVAL is a 16-bit two’s complement binary ranging from –32768 to 32767.

It is stored in the TVD register (see Section 5.2. on page 27).

Note: The actual resolution of the temperature sensor is 12 bit. The 16-bit representation avoids rounding errors in the computation.

The relation between TVAL and the junction temperature T_J is

$$T_J = \alpha_0 + TVAL \cdot \alpha_1$$

Table 2–1: Relation between T_J and T_{ADJ} (typical values)

| Coefficient | Value | Unit |
|-------------|------------|------|
| α_0 | 71.65 | °C |
| α_1 | 1 / 231.56 | °C |

2.2.2. DSP Configuration Registers

This section describes the function of the DSP configuration registers. For details on the EEPROM please refer to Section 5.5. on page 29.

Magnetic Range: RANGE

The RANGE register defines the magnetic range of the A/D converter. The RANGE register has to be set according to the applied magnetic field range.

It can be varied between:

- Typical ± 20 mT and ± 160 mT in steps of ± 20 mT.

For details, see Section 5.5. on page 29.

Note: The A/D values are not temperature compensated. Please take care that the A/D is not saturating over the used temperature range.

Filter Settings: FS and resolution of HVD

The FS register defines the sampling frequency of the built in digital low-pass filter. HAL 2831/HAL 2833 transmit 16 data bits for sampling frequencies below 500 Hz. Side effect is that the SENT protocol is extended by a fourth data nibble.

Fig. 2–3 shows the sensor’s transfer function. The transfer functions for all recommended settings of FS have been combined in this graph. The upper graph of **Fig. 2–3** shows the magnitude at the pass band and stop band. The lower graph is a zoom-in of the magnitude at the pass band.

The sensors have a linear phase behavior for sample frequencies of 1 or 2 kHz and a constant group delay. For the remaining sample frequencies, the phase is nearly linear at the pass band and the group delay is nearly constant.

All filter combinations have a very constant gain at the pass band and a high attenuation at the stop band. The low pass filter is of first order for 1 or 2 kHz filter frequency. At the remaining sample frequencies, the low pass filter is of second order. Thus, the slope at the cut-off frequency is bigger.

The graphs do include the transfer function of the Hall ADC (ADC and decimation filter) and the digital filter.

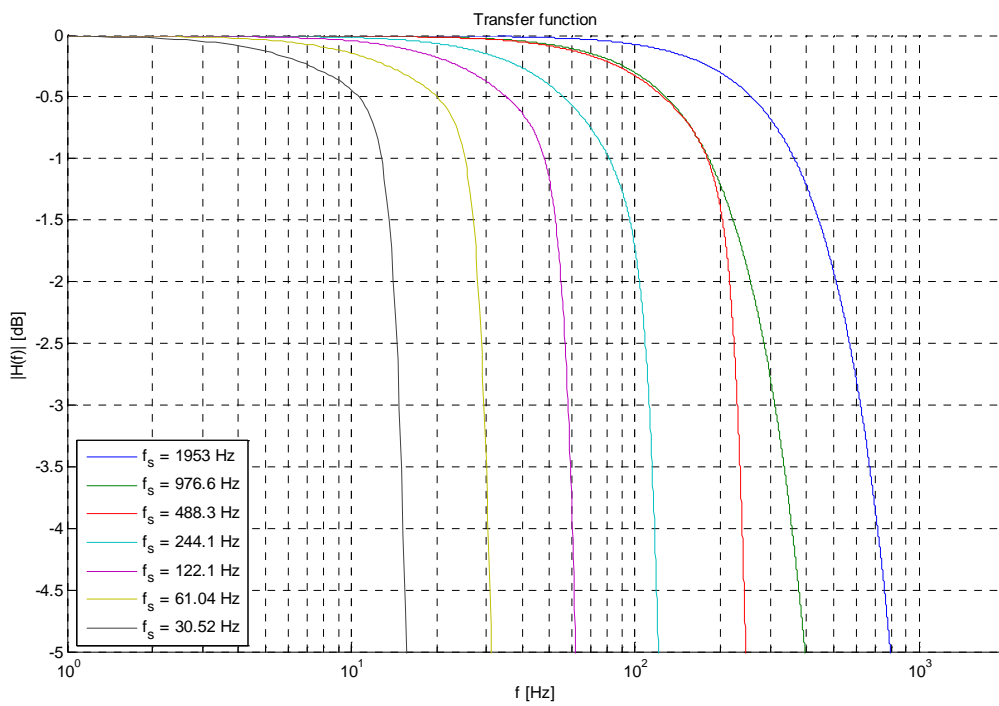
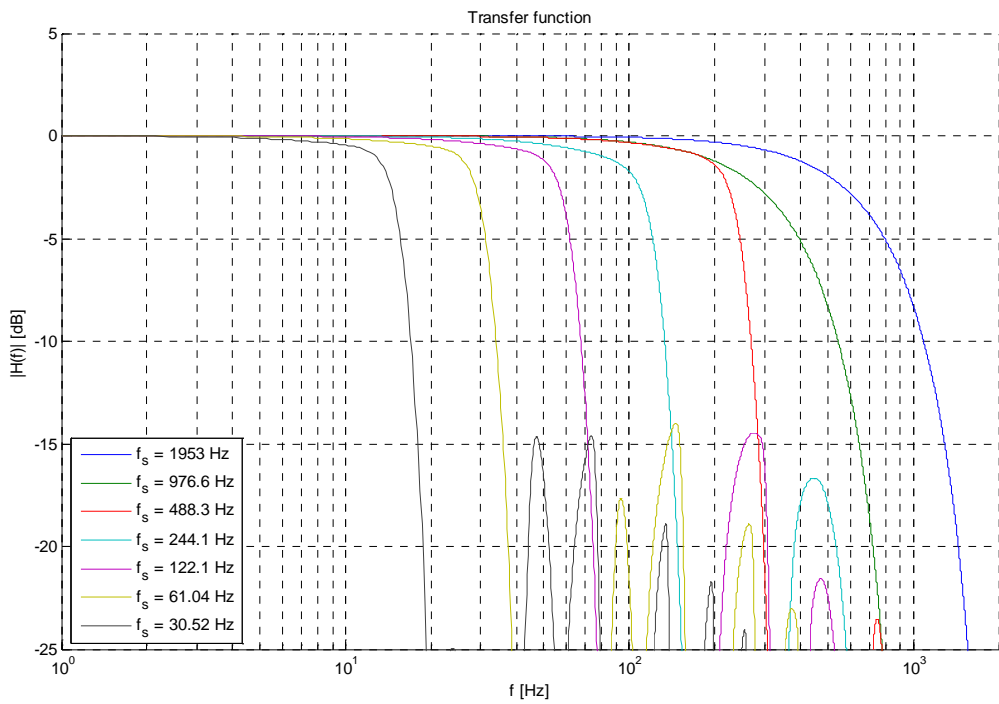


Fig. 2-3: Transfer function, magnitude

Table 2–2: Available sample frequencies and low pass filter.

| Sample Frequency | | FS | Resolution of HVD | | Recommend clock tick time | | | |
|------------------|------|-------|-------------------|------------------|---------------------------|---------------|-----------------------------|-----------------------------|
| | | | Sensor type | | No pause pulse | | Pause pulse | |
| typ. | | | HAL 2831/3 | HAL 2830/2 | HAL 2831 | HAL 2830 | HAL 2833 | HAL 2832 |
| [Hz] | [ms] | [Hex] | [LSB] | [LSB] | [μs] | | | |
| 2000 | 0.5 | 0x00 | 13 | 13 ²⁾ | 2.25 | 2.00 and 2.50 | 2.00 | 2.00, 2.25 |
| 1000 | 1 | 0x01 | 15 | 15 ²⁾ | 2.00 to 4.50 | 2.00 to 5.25 | 2.00 to 4.25 | 2.00 to 5.00 |
| 500 | 2 | 0x03 | 16 | 16 ²⁾ | 2.00 to 9.25 | 2.00 to 10.75 | 2.50 ¹⁾ to 8.75 | 2.50 ¹⁾ to 10.00 |
| 250 | 4 | 0x07 | | | 2.00 to 17.75 | 2.00 to 17.75 | 4.75 ¹⁾ to 17.75 | 4.75 ¹⁾ to 17.75 |
| 125 | 8 | 0x0B | | | | | 9.25 ¹⁾ to 17.75 | 9.5 ¹⁾ to 17.75 |
| 62 | 16 | 0x0F | | | | | n.a. ¹⁾ | n.a. ¹⁾ |
| 31 | 32 | 0x13 | | | | | | |

¹⁾ Limited by the maximum pause pulse length specified in SAE-J2716.
²⁾ A resolution of 12-bit is guaranteed only.

Magnetic Offset D

The D (offset) registers contain the parameter for the adder in the DSP. The added value is a first order polynomial of the temperature.

D0 Register

Table 2–3: Temperature independent coefficient

| Parameter | Range | Resolution |
|----------------|--------------------|------------|
| d ₀ | -0.5508 ... 0.5497 | 10 bit |
| D0 | -512 ... 511 | |

D0 is encoded as two's complement binary.

$$d_0 = \frac{0,5508}{512} \cdot D0$$

D1 Register

Table 2–4: Linear temperature coefficient

| Parameter | Range | Resolution |
|----------------|--|------------|
| d ₁ | -3.076 x 10 ⁻⁶ ... 3.028 x 10 ⁻⁶ | 7 bit |
| D1 | -64 ... 63 | |

D1 is encoded as two's complement binary.

$$d_1 = \frac{0,1008}{64} \cdot D1 \cdot 3,0518 \cdot 10^{-5}$$

Magnetic Sensitivity C

The C (sensitivity) registers contain the parameter for the multiplier in the DSP. The multiplication factor is a second order polynomial of the temperature.

C0 Register

Table 2–5: Temperature independent coefficient

| Parameter | Range | Resolution |
|----------------|--------------------|------------|
| c ₀ | –2.0810 ... 2.2696 | 12 bit |
| C0 | –2048 ... 2047 | |

C0 is encoded as two's complement binary:

$$c_0 = \frac{2,1758}{2048} \cdot (C0 + 89,261)$$

C1 Register

Table 2–6: Linear temperature coefficient

| Parameter | Range | Resolution |
|----------------|--|------------|
| c ₁ | –7.955 x 10 ^{–6} ... 1.951 x 10 ^{–5} | 9 bit |
| C1 | –256 ... 255 | |

C1 is encoded as two's complement binary.

$$c_1 = \frac{0,4509}{256} \cdot (C1 + 108,0) \cdot 3,0518 \cdot 10^{-5}$$

C2 Register

Table 2–7: Quadratic temperature coefficient

| Parameter | Range | Resolution |
|----------------|--|------------|
| c ₂ | –1.87 x 10 ^{–10} ... 1.86 x 10 ^{–10} | 8 bit |
| C2 | –128 ... 127 | |

C2 is encoded as two's complement binary.

$$c_2 = \frac{0,2008}{128} \cdot C2 \cdot 9,3132 \cdot 10^{-10}$$

2.3. Power-on Self Test (POST)

The HAL 283x features a built-in power-on self test to support in system start-up tests to enhanced the system failure detection possibilities.

The power-on self test comprises the following sensor blocks:

- RAM
- ROM
- EEPROM
- Full signal path included (Hall-Plates, ADC, low pass filter, temperature compensation and the SENT output)

The power-on self test can be activated by setting certain bits in the sensor's EEPROM. Also the test complexity is customer selectable. The following table shows the available test combinations.

Table 2–8: Power-On Self Test Modes

| EEPROM.POST | | | Mode / Function |
|-------------|-----|-----|---|
| [2] | [1] | [0] | |
| x | x | 0 | POST disabled. |
| x | 0 | 1 | Memory test only enabled (RAM, ROM, EEPROM). |
| x | 1 | 1 | Memory test and signal path stimulation enabled. |
| 0 | x | 1 | POST errors will be reported at the register PTE only. Hall values will be transmitted after POST fails. |
| 1 | x | 1 | POST errors will be reported at the status register PTE and do force HVAL to –32768. No Hall values will be transmitted after POST fails. |

Note: Please contact Micronas for further information about power-on self test.

3. Specifications

3.1. Outline Dimensions

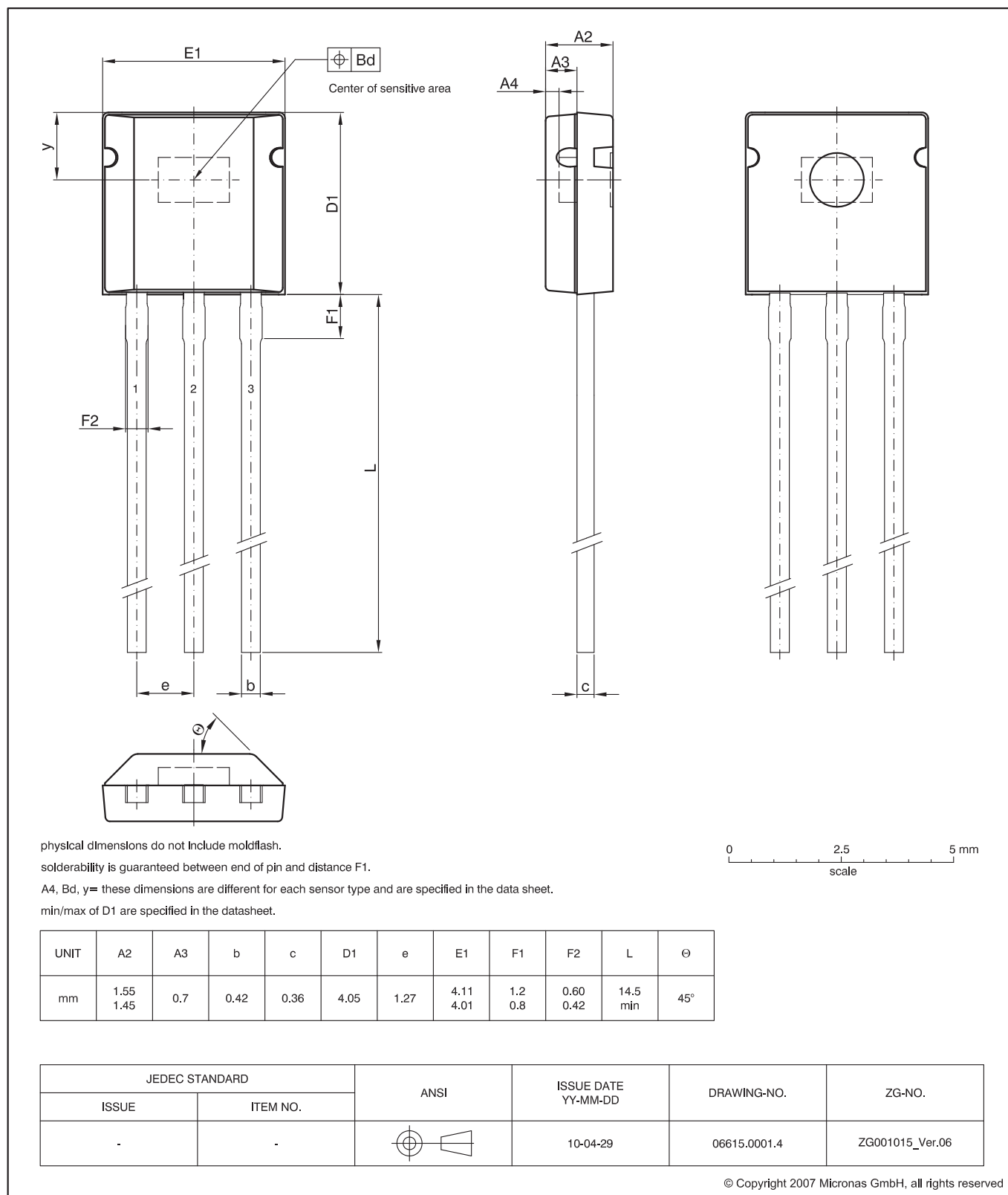


Fig. 3-1:
TO92UT-2 Plastic Transistor Standard UT package, 3 leads
 Weight approximately 0.105 g

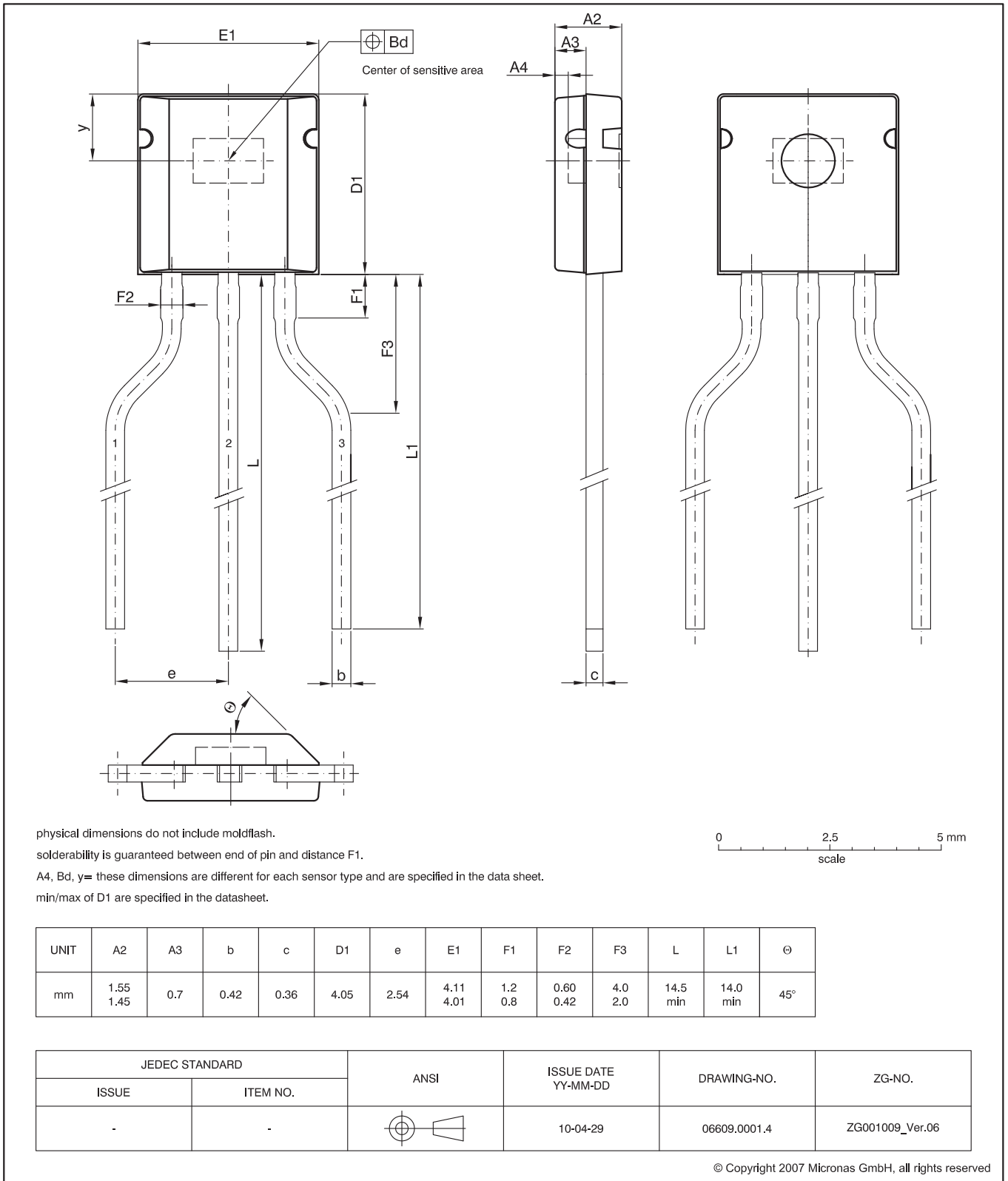


Fig. 3-1:
TO92UT-1 Plastic Transistor Standard UT package, 3 leads, spread
Weight approximately 0.105 g

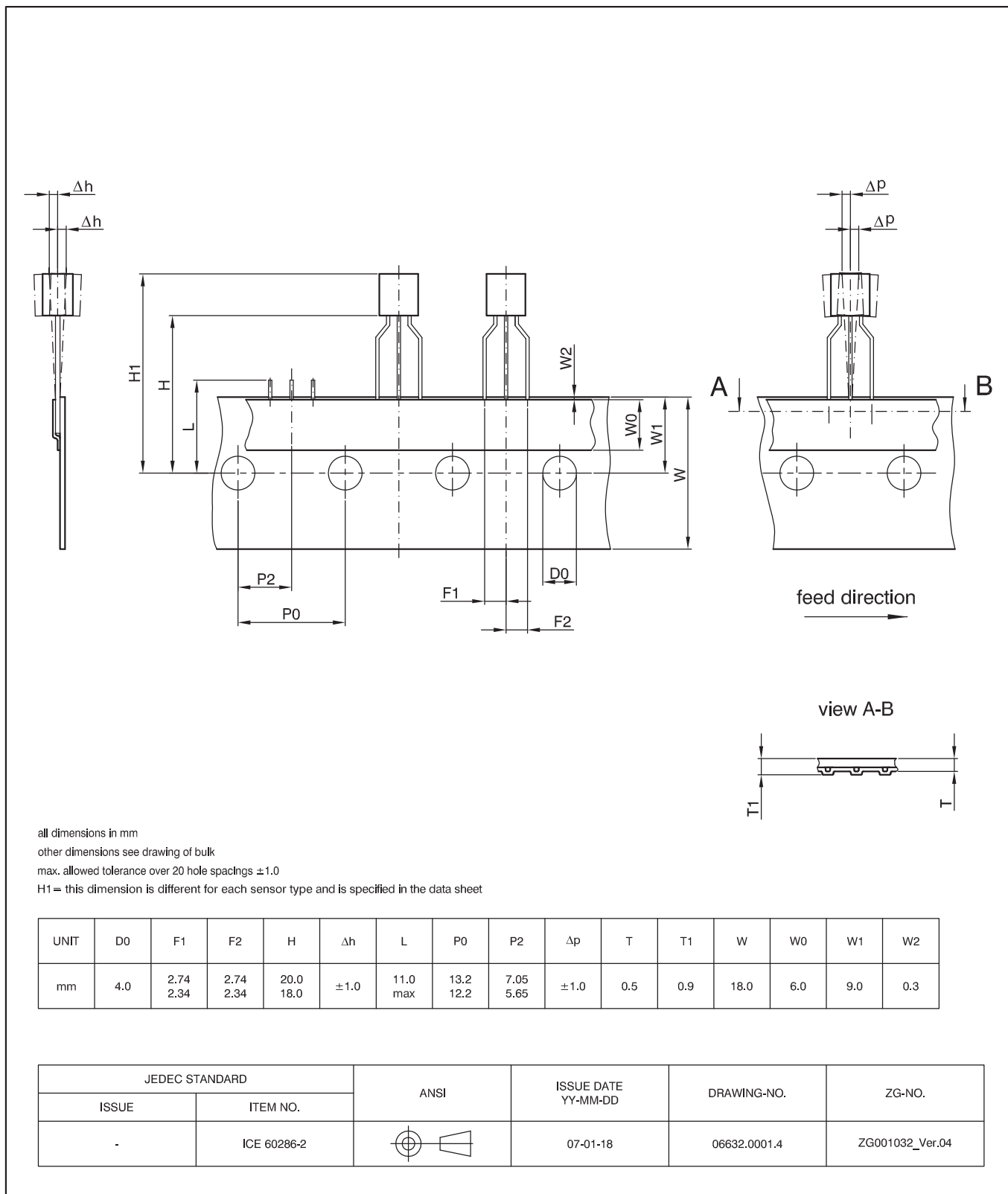


Fig. 3-1:
TO92UT-1: Dimensions ammopack inline, spread

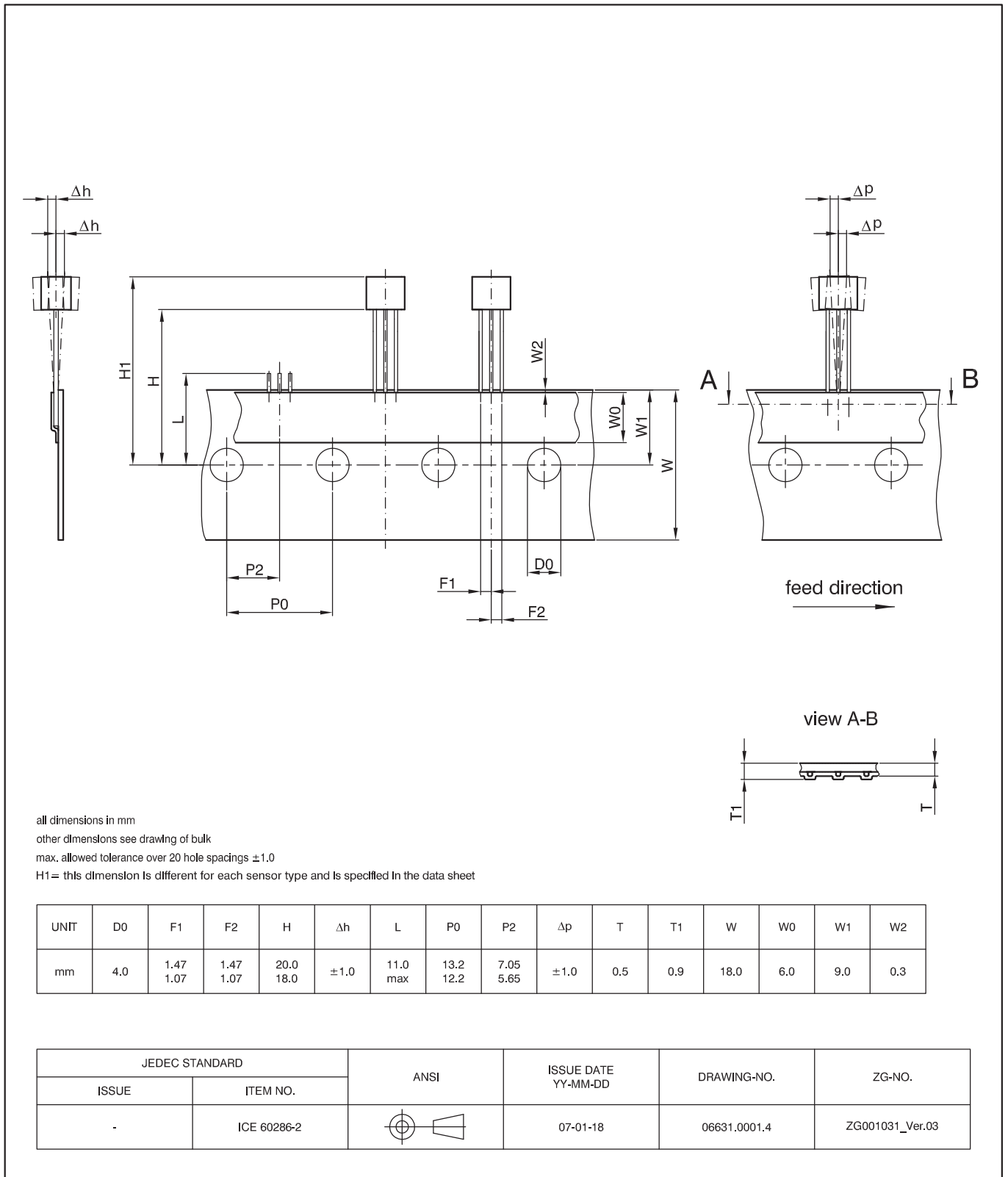


Fig. 3-2:
TO92UT-2: Dimensions ammpack inline, not spread

3.2. Dimensions of Sensitive Area

0.213 mm x 0.213 mm

3.3. Positions of Sensitive Area

| | TO92UT-1/2 |
|----|----------------------------|
| A4 | 0.4 mm |
| Bd | 0.3 mm |
| D1 | min. 4.0 mm, max. 4.1 mm |
| y | 1.5 mm nominal |
| H1 | min. 22.0 mm, max. 24.1 mm |

3.4. Absolute Maximum Ratings

Stresses beyond those listed in the “Absolute Maximum Ratings” may cause permanent damage to the device. This is a stress rating only. Functional operation of the device at these conditions is not implied. Exposure to absolute maximum rating conditions for extended periods will affect device reliability.

This device contains circuitry to protect the inputs and outputs against damage due to high static voltages or electric fields; however, it is advised that normal precautions be taken to avoid application of any voltage higher than absolute maximum-rated voltages to this high-impedance circuit.

All voltages listed are referenced to ground (GND).

| Symbol | Parameter | Pin Name | Min. | Max. | Unit | Condition |
|--|--------------------------------|-----------|------|-------------------|--------|---|
| T_J | Junction Operating Temperature | – | –40 | 190 ¹⁾ | °C | not additive |
| V_{SUP} | Supply Voltage | VSUP | –18 | 26.5 40 | V V | t < 5 min. t < five times 400 ms not additive |
| V_{DIO} | IO Voltage | DIO | –0.3 | 26.5 | V | t < 5 min. |
| B_{max} | Magnetic field | – | – | unlimited | T | |
| V_{ESD} | ESD Protection ²⁾ | VSUP, DIO | –8.0 | 8.0 | kV | |
| ¹⁾ for 96 h - Please contact Micronas for other temperature requirements. ²⁾ JESD22-A-114 (100 pF and 1.5 kΩ) | | | | | | |

3.4.1. Storage, Moisture Sensitivity Class, and Shelf Life

The permissible storage time (shelf life) of the sensors is unlimited, provided the sensors are stored at a maximum of 30 °C and a maximum of 85% relative humidity. At these conditions, no Dry Pack is required.

Solderability is guaranteed for one year from the date code on the package.

3.5. Recommended Operating Conditions

Functional operation of the device beyond those indicated in the “Recommended Operating Conditions/Characteristics” is not implied and may result in unpredictable behavior, reduce reliability and lifetime of the device.

All voltages listed are referenced to ground (GND).

| Symbol | Parameter | Pin Name | Min. | Max. | Unit | Remarks |
|---|--|----------|-------------------------------|-------------------------------|--------|---|
| V _{SUP} | Supply Voltage | VSUP | 4.5 | 18 | V | |
| V _{DIO} | Output Voltage | DIO | 0 | 18 | V | |
| I _{DIO} | Continuous Output Current | DIO | – | 20 | mA | for V _{DIO} = 0.8 V |
| V _{Pull-Up} | Pull-Up Voltage | – | 3.0 | 18 | V | In typical applications V _{Pull-Up,max} = 5.5 V |
| R _{Pull-Up} | Pull-Up Resistor | DIO | (see Section 6.3. on page 29) | | | |
| C _L | Load Capacitance | DIO | 180 | (see Section 6.3. on page 29) | pF | |
| N _{PRG} | Number of EEPROM Programming Cycles | – | – | 100 | cycles | 0 °C < T _{amb} < 55 °C |
| T _J | Junction Operating Temperature ¹⁾ | – | –40 –40 –40 | 125 150 170 | °C | for 8000 h (not additive) for 2000 h (not additive) for 1000 h (not additive) |
| 1) Depends on the temperature profile of the application. Please contact Micronas for life time calculations. | | | | | | |

3.6. Electrical Characteristics

at T_J = –40 °C to +170 °C, V_{SUP} = 4.5 V to 18 V, after programming the sensor and locking the DSP CONFIG EEPROM,

at Recommended Operating Conditions if not otherwise specified in the column “Conditions”.

Typical Characteristics for T_A = 25 °C and V_{SUP} = 5 V.

For all other temperature ranges this table is also valid, but only in the junction temperature range defined by the temperature grade (Example: For K-Type this table is limited to T_J = –40 °C to +140 °C).

| Symbol | Parameter | Pin Name | Min. | Typ. | Max. | Unit | Conditions |
|------------------------------|------------------------|----------|------------|--------|--------------------|------|---|
| I _{SUP} | Supply Current | VSUP | – | 12 | 19 | mA | |
| I _{DIOH} | Output Leakage Current | DIO | – | – | 20 | µA | |
| Digital I/O (DIO) Pin | | | | | | | |
| V _{OL} | Output Low Voltage | DIO | – | – | 0.8 0.2 0.09 | V | I _{OL} = 20 mA I _{OL} = 5 mA I _{OL} = 2.2 mA |
| | Output Resolution | DIO | – | – | 16 | bit | Depending on programming of the sensor and on the sensor type |
| ΔV/Δt _{fall} | Falling Edge Slew Rate | DIO | 1.4 0.7 | 2 1 | 2.6 1.3 | V/µs | SLEW = 2 SLEW = 3 |

| Symbol | Parameter | Pin Name | Min. | Typ. | Max. | Unit | Conditions |
|--|--|----------|------------|--------|------------|------------|--|
| $\Delta V / \Delta t_{\text{rise_max}}$ | Max. Rising Edge Slew Rate | DIO | 1.4 0.7 | 2 1 | 2.6 1.3 | V/ μ s | SLEW = 2 SLEW = 3 |
| t_{POD} | Power-Up Time (time to reach valid hall data at SENT output) | DIO | – | 8 | tbd | ms | Condition: sample frequency = 2 kHz and POST = 0 For sample frequencies below 2 kHz, the power-up time will increase due of the sample rate of the signal processing. |
| $t_{\text{startSENT}}$ | Power-Up Time of the SENT Interface | DIO | – | tbd | tbd | ms | |
| V_{SUPon} | Power-On Reset Level | VSUP | – | – | 4.45 | V | |

3.7. Magnetic Characteristics

at $T_J = -40\text{ }^\circ\text{C}$ to $+170\text{ }^\circ\text{C}$, $V_{\text{SUP}} = 4.5\text{ V}$ to 18 V , after programming the sensor and locking the DSP CONFIG EEPROM,

at Recommended Operating Conditions if not otherwise specified in the column “Conditions”.

Typical Characteristics for $T_A = 25\text{ }^\circ\text{C}$ and $V_{\text{DD}} = 5\text{ V}$.

For all other temperature ranges this table is also valid, but only in the junction temperature range defined by the temperature grade (Example: For K-Type this table is limited to $T_J = -40\text{ }^\circ\text{C}$ to $+140\text{ }^\circ\text{C}$).

| Symbol | Parameter | Pin Name | Min. | Typ. | Max. | Unit | Conditions |
|------------------------------|--|----------|-------|------|------|------------------------------|---|
| $\text{RANGE}_{\text{ABS}}$ | Absolute Magnetic Range of A/D Converter over Temperature | – | 60 | 100 | 110 | % | % of nominal RANGE Nominal RANGE programmable from +/- 20 mT up to +/- 160 mT |
| INL | Non-Linearity | DIO | -0.25 | 0 | 0.25 | % | % of full-scale |
| ES | Sensitivity Error over Temperature Range | DIO | -3 | 0 | 3 | % | (see Section 3.8.1.) |
| $\text{HVAL}_{\text{noise}}$ | Output Noise (rms) | DIO | – | 0.05 | 0.1 | mT | $B = 0\text{ mT}$, $\pm 100\text{ mT}$ range, $T_J = 25\text{ }^\circ\text{C}$, $f_s = 2\text{ kHz}$ HAL2830/HAL 2832 |
| B_{OFFSET} | Magnetic Offset | DIO | -0.4 | 0 | 0.4 | mT | $B = 0\text{ mT}$, $T_A = 25\text{ }^\circ\text{C}$ RANGE 80 mT |
| ΔB_{OFFSET} | Magnetic Offset Drift over Temperature Range $B_{\text{OFFSET}}(T) - B_{\text{OFFSET}}(25\text{ }^\circ\text{C})$ | DIO | -5 | 0 | 5 | $\mu\text{T}/^\circ\text{C}$ | $B = 0\text{ mT}$ RANGE 80 mT |

3.8. Thermal Characteristics

at Recommended Operating Conditions if not otherwise specified in the column “Conditions”,
 $T_J = -40\text{ °C}$ to $+170\text{ °C}$, $V_{SUP} = 4.5\text{ V}$ to 18 V .

| Symbol | Parameter | Pin Name | Min. | Typ. | Max. | Unit | Conditions |
|-----------------------|---|----------|------|------|------|------|------------------------|
| TO92UT Package | | | | | | | |
| R_{thja} | Thermal Resistance Junction to Ambient | – | – | – | 235 | K/W | measured on 1s0p board |
| R_{thjc} | Junction to Case | | – | – | 61 | K/W | measured on 1s0p board |
| R_{thjs} | Junction to Solder Point | | – | – | 128 | K/W | measured on 1s0p board |

3.8.1. Definition of Sensitivity Error ES

ES is the maximum of the absolute value of 1 minus the quotient of the normalized measured value¹⁾ over the normalized ideal linear²⁾ value:

$$ES = \max\left(\text{abs}\left(\frac{\text{meas}}{\text{ideal}} - 1\right)\right)_{[T_{min}, T_{max}]}$$

In the example shown in Fig. 3–3 on page 21, the maximum error occurs at -10 °C :

$$ES = \frac{1,001}{0,993} - 1 = 0.8\%$$

1) normalized to achieve a least-square-fit straight-line that has a value of 1 at 25 °C

2) normalized to achieve a value of 1 at 25 °C

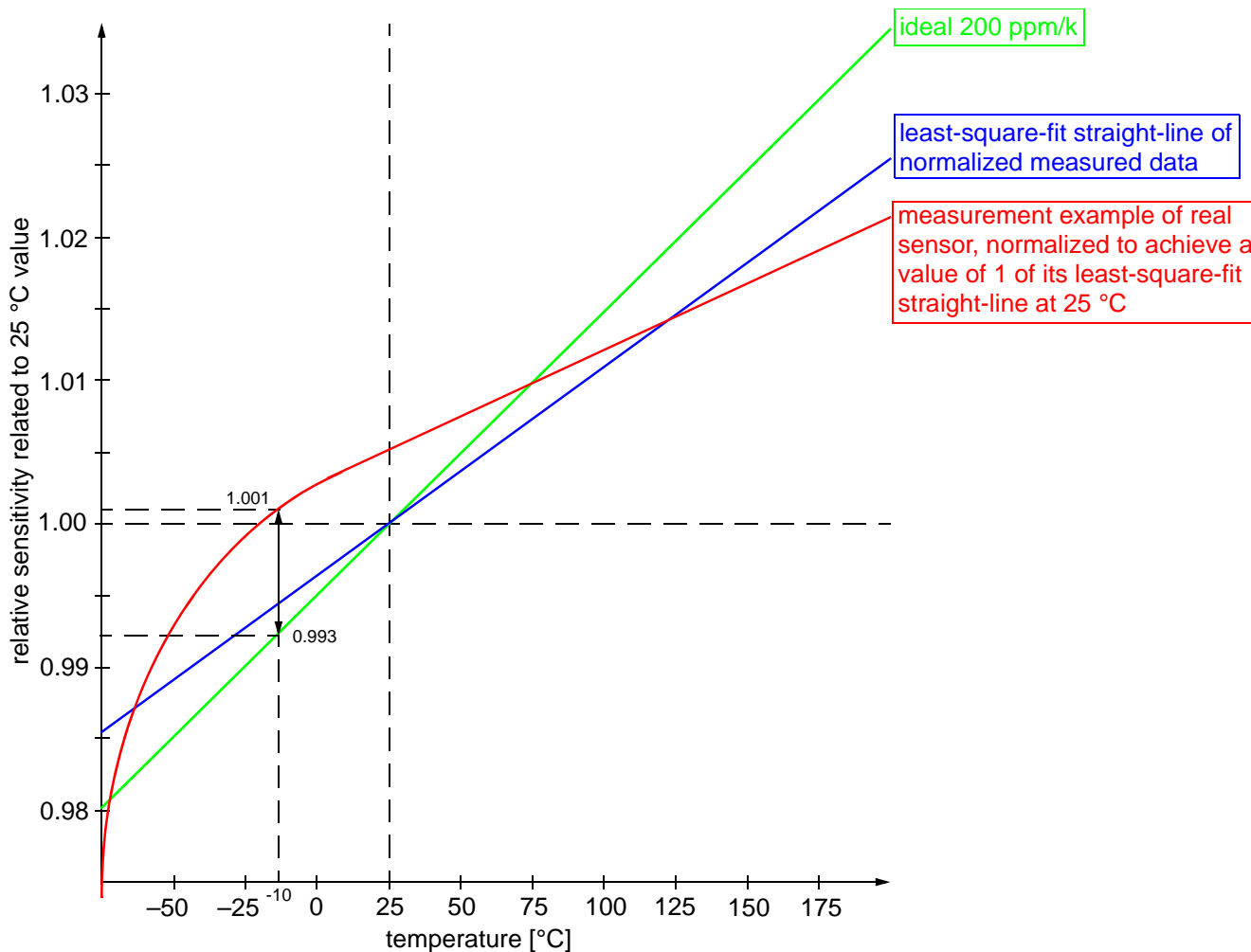


Fig. 3-3: Definition of sensitivity error (ES)

4. The SENT Module

The SENT interface is used for transmitting Hall values from the sensor to an ECU. Additional information is transmitted by serial data messages in the status nibble. HAL2830/HAL 2831 feature a SENT output without pause pulse and HAL 2832/HAL 2833 provides SENT messages with pause pulse. All sensors of the family HAL 283x supports the related SAE standards.

Fig. 4-1, Fig. 4-2, Fig. 4-3 and Table 4-1 describe the SENT timing in detail.

A SENT message consists of a synchronization / calibration pulse, a status and communication nibble, three or four data nibbles, a CRC nibble, and an optional pause pulse (only for HAL 2832/HAL 2833). Fig. 4-1, Fig. 4-2, and Fig. 4-3 are valid for SENT

messages with three data nibbles. The timing of a SENT message with four data nibbles is similar. The fourth data nibble is inserted between the third data nibble and the CRC nibble. It has the same characteristics as the remaining data nibbles. See Table 4-4 for the description of the pulses/nibbles of a message. The number of data nibbles depends on the sensor type.

After reset, the output is high. The transmission of SENT messages starts immediately after initialization. Due to the fact that the first valid Hall value will be typically calculated after the transmission has been started, the sensor transmits the initial value of HVD.HVAL first.

In case of an overcurrent at the DIO output, the output transistor will be switched off (high impedance).

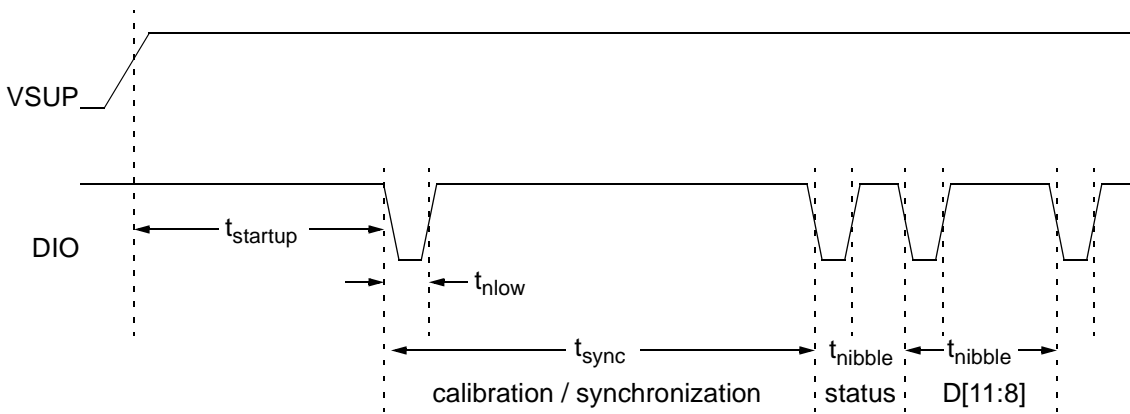


Fig. 4-1: SENT interface startup timing of HAL 283x

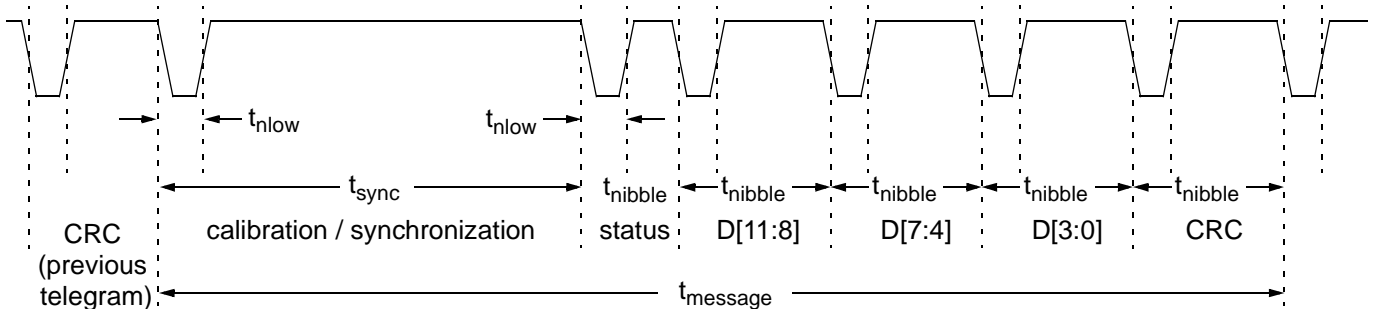


Fig. 4-2: SENT interface timing in case of HAL2830/HAL 2831

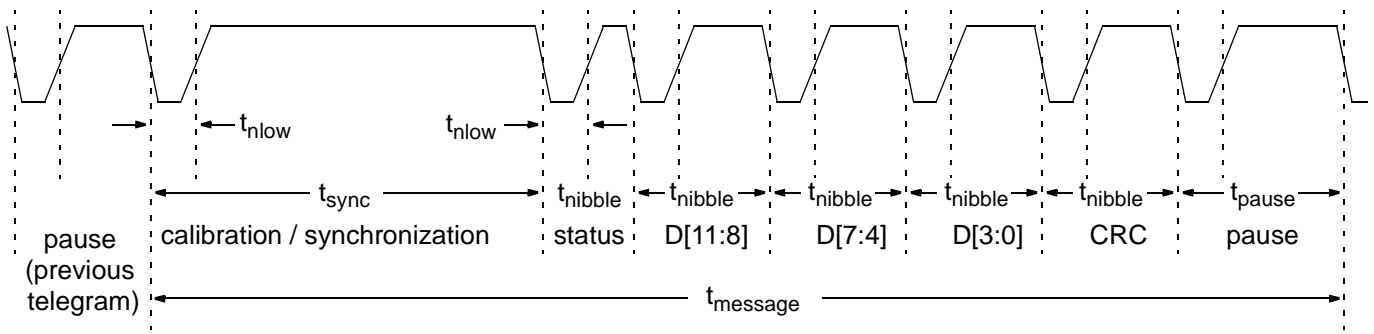


Fig. 4-3: SENT interface timing in case of HAL 2832/HAL 2833

Table 4-1: SENT interface timing

| Symbol | Parameter | Min. | Typ. | Max. | Unit | Condition / Remark |
|----------------------------|--|---|------|-----------------------|---------------|---|
| t_{tick} | Clock Tick Time | 2.00 ¹⁾²⁾ | – | 17.75 ¹⁾²⁾ | μs | |
| t_{nlow} | Nibble Low Time ⁵⁾ | 3) | | | μs | |
| | | 3.00 | | 6.75 | t_{tick} | Due to truncation errors, the max. low time may be slightly smaller at some clock tick times. |
| $\Delta V/\Delta t_{fall}$ | Falling edge slew rate | (see Section 3.6. on page 18) Not reverse voltage protected I/O logic, Typical slew rate = 1 V/ μs | | | | |
| $\Delta V/\Delta t_{rise}$ | Rising edge slew rate | (see Section 3.6. on page 18) Not reverse voltage protected I/O logic, Typical slew rate = 2 V/ μs | | | | |
| t_{sync} | Calibration / Synchronization Pulse Period | | 56 | | t_{tick} | |
| t_{nibble} | Nibble Pulse Period | 12 | | 27 | t_{tick} | $t_{nibble} = 12 + data$ |
| t_{pause} | Pause Pulse Period | 12 ⁴⁾ | | 768 ⁴⁾ | t_{tick} | Only available for HAL 2832/ HAL 2833 |
| $t_{message}$ | Message Time | (see Table on page 26) | | | | |
| t_{delay_sm} | New Hall Sample to Message Start Delay | | | 1 | $t_{message}$ | SENT message without pause pulse (HAL 2830/ HAL 2831) |
| | | | | tbd | μs | SENT message with pause pulse (HAL 2832/ HAL 2833) |

1) Clock tolerance of +/- 10 % is not included
 2) $t_{tick} = (8 + TICK) \times 0.25 \mu s$, TICK = 0 to 63 [0.227 μs to 0.278 μs]
 3) $t_{nlow} = trunc((8 + TICK) \times (12 + LT) / 4) \times 0.25$, TICK = 0 to 63, LT = 0 to 15 [0.227 μs to 0.278 μs]
 4) Specified value of SAE-J2716 2010-01. It is necessary to select an appropriate sample rate and clock tick time to guarantee the limit.
 5) Internal timing only. The timing at the output pin depends on the selected Tick Time due to the different recommended slew rates. Internal low time and external low time are nearly identical for Tick Times $t_{tick} = 2 \mu s$ to 2.5 μs . Tick Times $t_{tick} > 2.5 \mu s$ generate an offset between internal and external Nibble Low Time. The offset can be calculated as follows:
 Offset ~ $(V_{Pull-Up} - V_{OL})/\Delta V/\Delta t_{rise} - (V_{Pull-Up} - V_{OL})/\Delta V/\Delta t_{fall}$

In case of HAL2830/HAL 2831 the message time of a SENT message depends on the configured tick time and the transmitted data value. The SENT messages are transmitted asynchronously to the Hall samples. See Table 4–2 for recommended tick times. In case that slower tick times will be chosen, Hall samples may be lost and aliasing may occur. When using the recommended tick times, samples may be transmitted twice in series due to the fact that the mean message time is shorter than the Hall sample time. A RDBL (read double) flag has been implemented for marking messages which does not contain a new Hall sample. The RDBL flag is located in the register SPS and is transmitted by the status and communication nibble.

This is not necessary for HAL 2832/HAL 2833 with pause pulse. For these devices the SENT messages are synchronous with the delivery of new Hall samples. One SENT message is transmitted per Hall sample. Thus, the propagation delay is very low and the message time is nearly constant. See Table 4–2 for

recommended tick times. The usage of tick times slower than recommended may lead to corrupted SENT messages. The usage of tick times faster than recommended may lead to a pause pulse which exceeds the limit specified in SAE-J2716 2010-01.

Additional information is transmitted by serial data messages (short format). Serial messages are transmitted by bit 2 and 3 of the status nibble. See SAE-J2716 for more information about the short serial data message format. See Table 4–5 for the used IDs and the data content of the IDs. The IDs are continuously transmitted from the lowest ID to highest ID.

The SENT clock tick time can be configured by the EEPROM bit field TICK. See Table 4–1 and Table 4–2. The low time can be configured by the EEPROM bit field LT. See Table 4–1 and Table 4–2. The adjusted slew rate depends on the SENT clock tick time. See Table 4–1.

Table 4–2: Recommended settings for Low Tick Time

| TICK | t_{tick} | Slew Rate | Min. Recommended Low Time | | | Max. Recommended Low Time | | | Remark | | | | | | |
|-------|-------------------|---------------------|---------------------------|-----------------------|---------------------------------|---------------------------|-----------------------|---------------------------------|--------|------|--------|-------|-------|------|-------|
| | typ. | | typ. | LT | t_{nlow} | LT | t_{nlow} | | | | | | | | |
| [LSB] | [μs] | [V/ μs] | [LSB] | [t_{tick}] | [μs] ¹⁾ | [LSB] | [t_{tick}] | [μs] ¹⁾ | | | | | | | |
| 0 | 2.00 | 2 | 0 | 3.00 | 6.00 | 15 | 6.75 | 13.50 | | | | | | | |
| 1 | 2.25 | | | | | | | | 6.75 | 6.67 | 15.00 | | | | |
| 2 | 2.50 | | | | | | | | | | | | | | |
| 3 | 2.75 | 1 | 2 | 3.45 | 9.50 | 11 | 5.73 | 15.75 | | | | | | | |
| 4 | 3.00 | | 1 | 3.25 | 9.75 | 13 | 6.25 | 18.75 | | | | | | | |
| 5 | 3.25 | | 0 | 3.00 | 9.75 | 14 | 6.46 | 21.00 | | | | | | | |
| 6 | 3.50 | | | | | | | | 10.50 | 15 | 6.71 | 23.50 | | | |
| 8 | 4.00 | | | | | | | | | | | | 12.00 | 6.75 | 27.00 |
| 12 | 5.00 | | | | | | | | | | | | | | |
| 63 | 17.75 | | | | | | | | 53.25 | 6.75 | 119.75 | | | | |

¹⁾ Clock tolerance of $\pm 10\%$ is not included

Table 4–3: Recommended settings for SAE-J2716 compliance

| TICK | t_{tick} | Slew Rate | Min. Recommended Low Time | | | Max. Recommended Low Time | | | Remark | |
|------|------------|------------|---------------------------|------------|----------------|---------------------------|------------|----------------|--------|--------------------------|
| | typ. | typ. | LT | t_{nlow} | | LT | t_{nlow} | | | |
| | [LSB] | [μ s] | [V/ μ s] | [LSB] | [t_{tick}] | [μ s] ¹⁾ | [LSB] | [t_{tick}] | | [μ s] ¹⁾ |
| 3 | 2.75 | 1 | 4 | 4.00 | 11.00 | 11 | 5.73 | 15.75 | | |
| 4 | 3.00 | | | | 12.00 | | 13 | 6.25 | 18.75 | |
| 5 | 3.25 | | | | 13.00 | | 14 | 6.46 | 21.00 | |
| 6 | 3.50 | | | | 14.00 | | 15 | 6.71 | 23.50 | |
| 8 | 4.00 | | | | 16.00 | | | 6.75 | 27.00 | |
| 12 | 5.00 | | | | 20.00 | | | 6.75 | 33.75 | |
| 63 | 17.75 | | | | 71.00 | | 6.75 | 119.75 | | |

¹⁾ Clock tolerance of $\pm 10\%$ is not included

Table 4–4: Nibble / pulse description

| # | Pulse | Number of Clock Ticks | | Description |
|-----------|-------------------------------|-----------------------|-------------------|--|
| | | min. | max. | |
| 1 | Synchronization/ Calibration | 56 | | It is recommended to measure the synchronization / calibration period for calibration of the clock tick time t_{tick} at the ECU. |
| 2 | Status & Communication Nibble | 12 | 27 | Bit 0: SPS.RDBL (Hall sample has been already transmitted) Bit 1: MDS.PTO (Power on test is operating) Bit 2: Serial message data bit (See SAE-J2716) Bit 3: Serial message start (See SAE-J2716) |
| 3 | Data Nibble 1 | | | HVD[15:12] |
| 4 | Data Nibble 2 | | | HVD[11:8] |
| 5 | Data Nibble 3 | | | HVD[7:4] |
| - / 6 | Data Nibble 4 (optional) | | | HVD[3:0] Only in case of HAL 2831/HAL 2833 |
| 6 / 7 | CRC Nibble | | | Checksum of data nibble 1 to data nibble 4. See SAE-J2716 2008-02 or SAE-J2716 2010-01 for more information. |
| - / 7 / 8 | Pause Pulse (optional) | 12 ¹⁾ | 768 ¹⁾ | Only for HAL 2832/HAL 2833 |

¹⁾ Recommended value. See Table 4–1 for more information

Table 4–5: Serial message content

| ID | Content | Remark |
|----|--------------|---|
| 0 | SN[7:0] | Serial Number, byte 1 |
| 1 | SN[15:8] | Serial Number, byte 2 |
| 2 | SN[23:16] | Serial Number, byte 3 |
| 3 | SN[31:24] | Serial Number, byte 4 |
| 4 | TVD[7:0] | Temperature value data register. High byte must be captured when low byte is read for transmission. |
| 5 | TVD[15:8] | |
| 6 | SPE | Signal path status register |
| 7 | DS | Device status register |
| 8 | PTE | Power-on test error register |
| 9 | SYSCLK[7:0] | System clock, byte 1 |
| 10 | SYSCLK[15:8] | System clock, byte 2 |

Table 4–6: Message length

| TICK | t _{tick} | SENT Message | | | |
|---|-------------------|------------------|------------------|------------------|------------------|
| | | Sensor Type | | | |
| | | HAL 2830/2 | | HAL 2831/3 | |
| Message Length in t _{tick} and μs (brackets) ³⁾ | | | | | |
| [LSB] | [μs] | min. | max. | min. | max. |
| 0 | 2.00 | 116 (232 μs) | 191 (382 μs) | 128 (256 μs) | 218 (436 μs) |
| 1 | 2.25 | 116 (261 μs) | 191 (430 μs) | 128 (288 μs) | 218 (491 μs) |
| 2 | 2.50 | 116 (290 μs) | 191 (478 μs) | 128 (320 μs) | 218 (545 μs) |
| 3 | 2.75 | 116 (319 μs) | 191 (525 μs) | 128 (352 μs) | 218 (560 μs) |
| 4 | 3.00 | 116 (348 μs) | 191 (573 μs) | 128 (384 μs) | 218 (654 μs) |
| 8 | 4.00 | 116 (464 μs) | 191 (764 μs) | 128 (512 μs) | 218 (872 μs) |
| 12 | 5.00 | 116 (580 μs) | 191 (955 μs) | 128 (640 μs) | 218 (1090 μs) |
| 63 | 17.75 | 116 (2059 μs) | 191 (3390 μs) | 128 (2272 μs) | 218 (3870 μs) |

1) Recommended min. message time. t_{message} = max. t_{message} of no pause pulse + 12 ticks
 2) Recommended max. message time. t_{message} = min. t_{message} of no pause pulse + 256 * 3 ticks
 3) Clock tolerance of ±10 % is not included

5. Programming of the Sensor

HAL 283x features two different customer modes. In **Application Mode** the sensor provides a continuous PWM signal transmitting temperature-compensated magnetic field values. In **Programming Mode** it is possible to change the register settings of the sensor.

After power-up the sensor is always operating in the **Application Mode**. It is switched to the **Programming Mode** by a defined sequence on the sensor output pin.

5.1. Programming Interface

In Programming Mode the sensor is addressed by modulating a serial telegram (BiPhase-M) with constant bit time on the output pin. The sensor answers with a modulation of the output voltage.

A logical "0" of the serial telegram is coded as no level change within the bit time. A logical "1" is coded as a level change of typically 50% of the bit time. After each bit, a level change occurs (see Table 5–1).

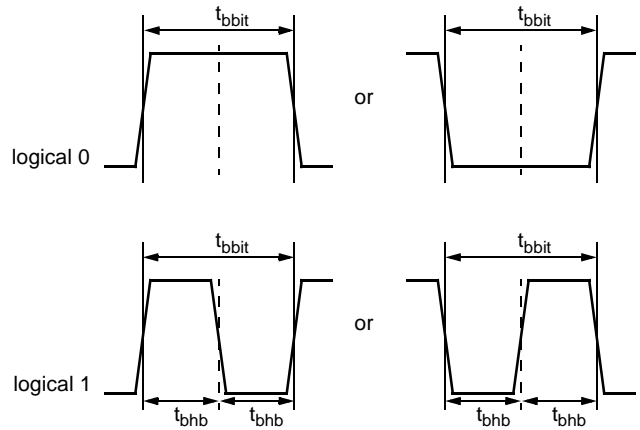


Fig. 5–1: Definition of logical 0 and 1 bit

A description of the communication protocol and the programming of the sensor is available in a separate document (Application Note Programming HAL 283x).

The serial telegram is used to transmit the EEPROM content, error codes and digital values of the magnetic field or temperature from and to the sensor.

Table 5–1: Biphase-M frame characteristics of the host

| Symbol | Parameter | Min. | Typ. | Max. | Unit | Remark |
|--------------------|-----------------------------------|------|------|------|-------------------|--------|
| $t_{bbit} (host)$ | Biphase Bit Time | 970 | 1024 | 1075 | μs | |
| $t_{bhb} (host)$ | Biphase Half Bit Time | 0.45 | 0.5 | 0.55 | $t_{bbit} (host)$ | |
| $t_{bifsp} (host)$ | Biphase Interframe Space | 3 | – | – | $t_{bbit} (host)$ | |
| V_{OUTL} | Voltage for Low Level | tbd | tbd | tbd | V | |
| V_{OUTH} | Voltage for High Level | tbd | tbd | tbd | V | |
| V_{DDPRG} | Supply Voltage During Programming | 5.5 | – | 18 | V | |

Table 5–2: Biphase-M frame characteristics of the sensor

| Symbol | Parameter | Min. | Typ. | Max. | Unit | Remark |
|---------------------|-----------------------|------|------|------|---------------------|--------|
| $t_{bbit} (sensor)$ | Biphase Bit Time | 820 | 1024 | 1225 | μs | |
| $t_{bhb} (sensor)$ | Biphase Half Bit Time | – | 0.5 | – | $t_{bbit} (sensor)$ | |
| t_{bresp} | Biphase Response Time | 1 | – | 5 | $t_{bbit} (sensor)$ | |
| | Slew Rate | | 2 | | V/ μs | |

5.2. Programming Environment and Tools

For the programming of HAL 283x during product development and also for production purposes a programming tool including hardware and software is available on request. It is recommended to use the Micronas tool kit in order to ease the product development. The details of programming sequences are also available on request.

5.3. Programming Information

For production and qualification tests, it is mandatory to set the LOCK bit after final adjustment and programming of HAL 283x. The LOCK function is active after the next power-up of the sensor.

The success of the LOCK procedure should be checked by reading the status of the LOCK bit after locking and/or by a check of the sensors output signal.

Electrostatic Discharge (ESD) may disturb the programming pulses. Please take precautions against ESD and check the sensors error flags.

6. Application Notes

6.1. Ambient Temperature

Due to the internal power dissipation, the temperature on the silicon chip (junction temperature T_J) is higher than the temperature outside the package (ambient temperature T_A).

$$T_J = T_A + \Delta T$$

At static conditions and continuous operation, the following equation applies:

$$\Delta T = I_{SUP} \times V_{SUP} \times R_{thJX} + I_{DIO} \times V_{DIO} \times R_{thJX}$$

For typical values, use the typical parameters. For worst case calculation, use the max. parameters for I_{SUP} and R_{th} , and the max. value for V_{SUP} from the application. The choice of the relevant R_{thJX} -parameter (R_{thja} , R_{thjc} , or R_{thjs}) depends on the way the device is (thermally) coupled to its application environment.

For the HAL 283x, the junction temperature T_J is specified. The maximum ambient temperature T_{Amax} can be calculated as:

$$T_{Amax} = T_{Jmax} - \Delta T$$

6.2. EMC and ESD

For applications that cause disturbances on the supply line or radiated disturbances, a series resistor and a capacitor are recommended. The series resistor and the capacitor should be placed as closely as possible to the Hall sensor.

Please contact Micronas for detailed investigation reports with EMC and ESD results.

6.3. Application Circuit

Micronas recommends the following two application circuits for the HAL 283x.

The external circuit mentioned in Fig. 6–1 is recommended when $V_{BAT} \geq V_{Pull-up}$. It is typically used when the supply pin is directly connected with the battery voltage and the DIO pin operates on a regulated power supply.

Fig. 6–2 shows the recommended circuit according to the SAE-J2716 2010-01. It can be used when $V_{BAT} = V_{Pull-up} < 7$ V. The Pull-up resistor $R_{Pull-up1}$ must be placed close to the sensor to be compliant with the SENT specification. For saving external components, the resistors $R_{Pull-up1}$ and $R_{Pull-up2}$ could be combined to $R_{Pull-up}$ and placed close to the ECU. This might be possible for some applications only and will not be compliant with the SENT specification.

The electrical characteristics mentioned in Section 3. (e.g. V_{SUP}) has to be considered at the system setup. They may reduce the operation range.

Values of external components:

$$C_{VSUP} = 47 \text{ nF}$$

$$C_{DIO} = 180 \text{ pF}$$

The maximum allowed load capacitor and the minimum resistance can be calculated with the following equation:

$$C_L = C_{DIO} + C_{wire} + C_{INPUT}$$

$$R_L = R_{Pull-up}$$

$$R_L \geq (V_{Pull-up (max.)} - V_{DIO L (max.)}) / (I_{DIO} - (C_L \times (\Delta V / \Delta t_{fall})))$$

$$C_L \leq 0.4 \times V_{Pull-up (min.)} / (R_L \times (\Delta V / \Delta t_{rise}))$$

$$R_{Pull-up} = R_{Pull-up1} \parallel R_{Pull-up2}$$

- $R_{Pull-up}$: Pull-up resistor between DIO and $V_{Pull-up}$
- C_{VSUP} : Capacitance between the VSUP pin and GND
- C_{DIO} : EMC protection capacitance on the DIO pin
- C_{wire} : Capacity of the wire
- C_{INPUT} : Input capacitance of the ECU

- $V_{Pull-up (max.)}$: Max. applied Pull-up voltage, must be lower than the value specified in section 3.5.
- $V_{Pull-up (min.)}$: Min. applied Pull-up voltage, must be higher than the value specified in section 3.5.
- $V_{DIO L (max.)}$: Max. DIO low voltage, it is recommended to use the value specified in section 3.6.
- I_{DIO} : DIO current at $V_{DIO L (max.)}$
- $\Delta V / \Delta t_{rise}$: Selected rising edge slew rate, the max. value specified in section 3.6. has to be used
- $\Delta V / \Delta t_{fall}$: Selected falling edge slew rate, the max. value specified in section 3.6. has to be used

Example for Calculating R_L and C_L (max.)

The application operates at following conditions:
 falling slew rate = 1 V/ μ s (typ.)
 rising slew rate = 0.5 V/ μ s (typ.)
 $V_{Pull-up}$ = 5.5 V (max.)
 C_L = 400 pF

Calculation:

$$R_L \geq (5.5 \text{ V} - 0.8 \text{ V}) / (20 \text{ mA} - 400 \text{ pF} \times 1.3 \text{ V}/\mu\text{s})$$

$$= 241 \text{ Ohm } \mathbf{R_L = 1000 \text{ Ohm}}$$

Check C_L :

$$C_L = 400 \text{ pF} \leq 0.4 \times 4.5 \text{ V} / (1000 \text{ Ohm} \times 0.65 \text{ V}/\mu\text{s}) = 2.77 \text{ nF}$$

The used C_L is below the limit.

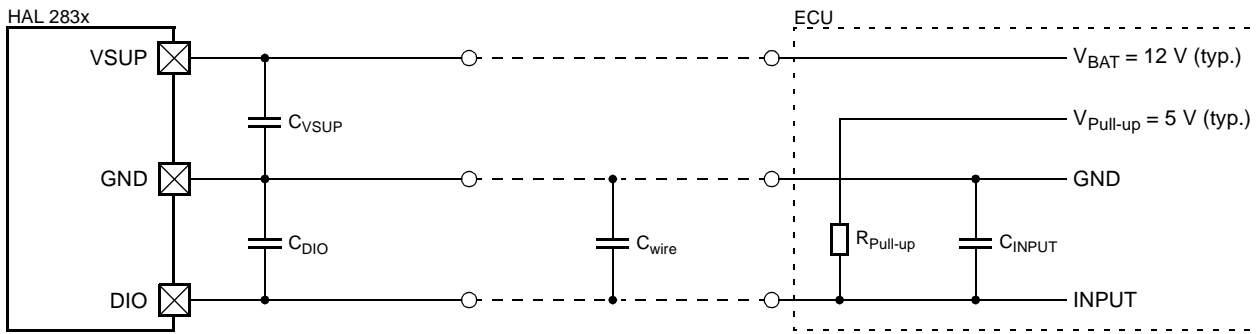


Fig. 6-1: Recommended external circuit for $V_{BAT} \geq V_{Pull-up}$

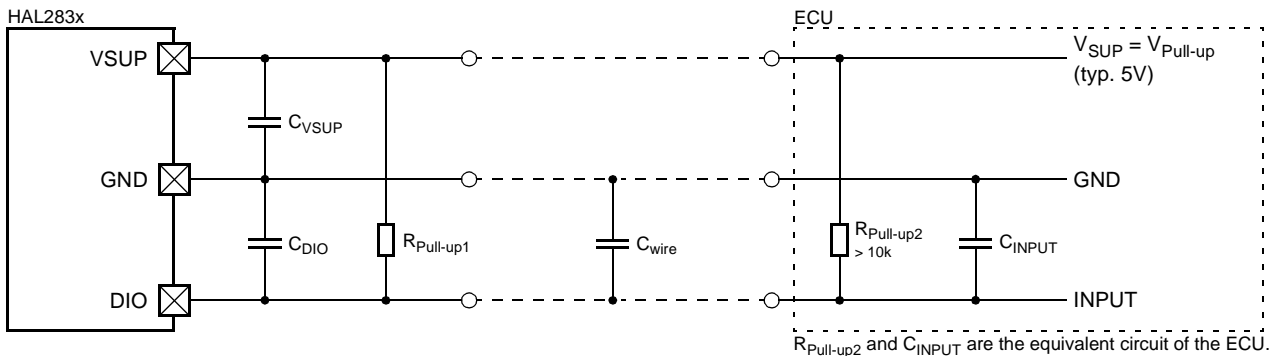


Fig. 6-2: Recommended external circuit for $V_{BAT} = V_{Pull-up} < 7 \text{ V}$

Note: The external components needed to protect against EMC and ESD may differ from the application circuit shown and have to be determined according to the needs of the application specific environment.

intentionally left vacant

7. Data Sheet History

1. Advance Information: "HAL 2830 Linear Hall-Effect Sensor Family with SENT Interface", Oct. 9, 2008, AI000143-001EN. First release of the advance information.
Originally created for HW version HAPB-2-F & 2-G.
2. Advance Information: "HAL 283x Linear Hall-Effect Sensor Family with SENT Interface", Sept. 6, 2010, AI000143-002EN. Second release of the advance information.