

Instruction for Uploading Traces on Lahniss FTP site

Roland Gamper, Lahniss

Context

The following explanations guide users when there is a need to upload a large file onto the Lahniss FTP site. The Lahniss upload facility allows the users to manage the files they have uploaded. They can create subdirectories, rename files, delete files and organize the information in any manner deemed suitable. Please refer to the corresponding documents in the FAQ section for acquiring and storing files in an optimal manner.

Uploading and downloading the files

Serial Data files can get large. In some cases too large to send over e-mail. Lahniss has a dedicated mechanism for communities needing to share large files. When the need arise, the Lahniss engineer will allocate a Dataset to the user(s).

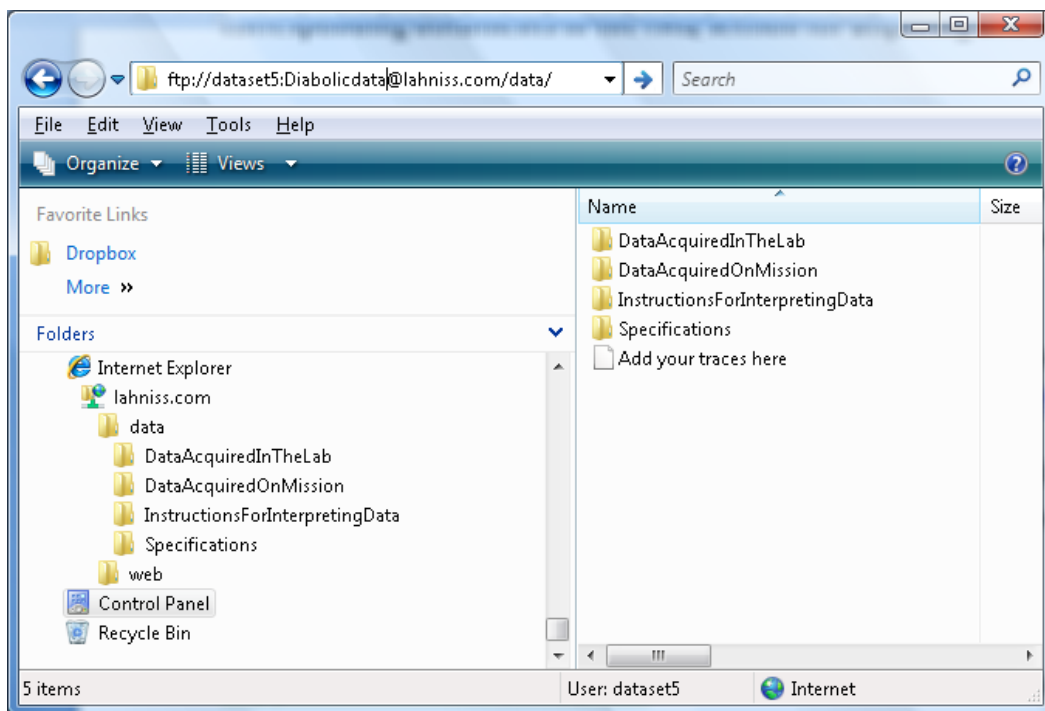
The access to the dataset is provided by the following information:

<ftp://dataset3:Diabolicdata@lahniss.com/data/>

2 ways of using this access are shown here, either via Windows Explorer or via Internet Explorer. Other browsers can certainly be used, but have not been tested and documented.

Using Windows Explorer

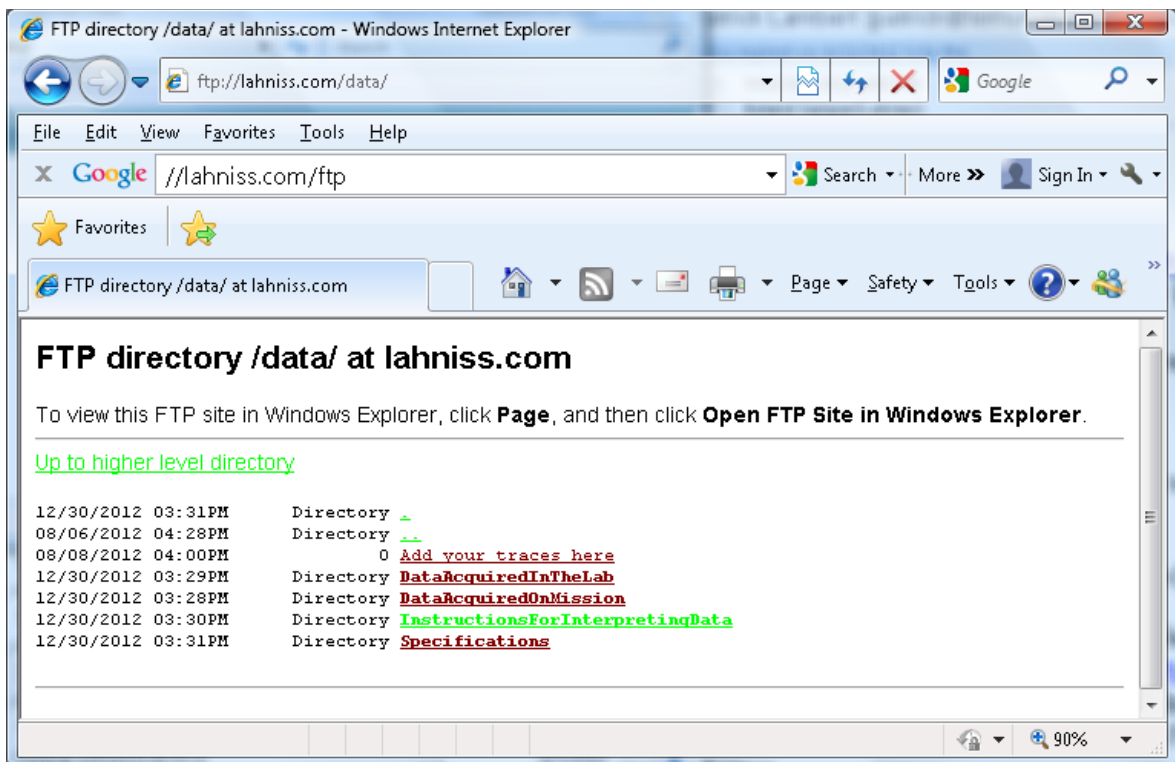
Copy the line received, and paste it into the address bar of Windows Explorer:



Under this data set, you can deposit files, create subdirectories, name them, erase them, etc. The limit is 1 Gigabyte

Using Internet Explorer

Alternatively you can use Internet Explorer (IE) or another browser to access the Dataset you have been allocated. After copying and pasting the line above, you will receive:



Then proceed as per instructions via “Page” and “open FTP Site in Windows Explorer” which will present a dialog prompting you for a User name and Password.

- User Name: dataset2
- PW: Diabolicdata



In this mode the ability to manage sub-directories, naming and deletion depends on the browser.